



Bravoled 2x2Ft LED Troffer Retrofit Kit, 40Watt 4200lm & 5000lm

## Specifications

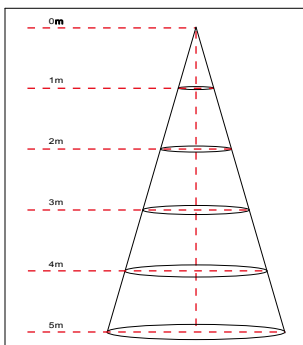
Model#	BL-TRF-22-40W-XTTD
Description	2x2Ft LED Troffer Retrofit Kit
Power	40W
Voltage Input	AC120~277V 50~60HZ
Efficacy	105 Lm/w & 125 Lm/w
Lumen output	4200lm & 5000lm
CRI	Ra>80
Housing Finish	Steel base with white powder coating
Application	Indoor Only
Lens	Frosted diffuse PC lens
Operating Temp.	-20 °C ~ 55 °C
IP Rating	IP20
Certificates	ETL/cETL(file# 4007551), DLC
warranty	5 years
Life Span	50,000 hours
Dimmable	0~10V dimmable
Item Weight	4.1 Kg (9.02 lbs)
Product Dimension	For 2'X2' troffer (533.4 x 533.4mm)
Pack Size	1pc
Packaging Dimension	24.4"L x 24.4"W x 3"H (619.76x619.76x76.2 mm)



## Order Information

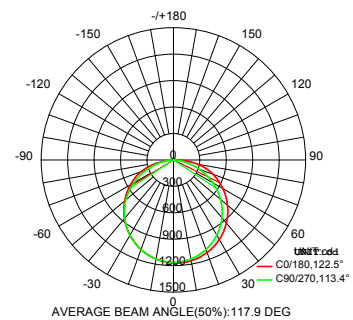
Item Number	Description	Power	Voltage Input	Dimmable	CCT	Lumen Output	Certificates
BL-TRF-22-40W-XTTD	2x2Ft LED Troffer Retrofit Kit	40W	120~277Vac	Optional	4000k 5000k	4200lm 5000lm	ETL/cETL, DLC

## Lux Chart



Height	Average Lux (lx)	Light range (dia.)
1M	304.6	332.2cm
2M	76.1	664.4cm
3M	33.9	996.6cm
4M	19.0	1328.8cm
5M	12.2	1660.99cm

## Photometrics

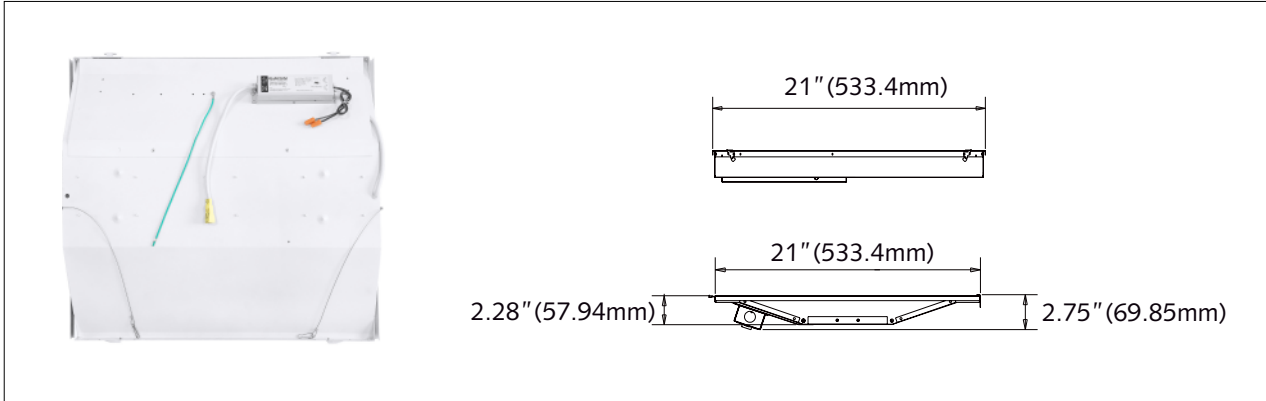


**LM79**  
**LM80**

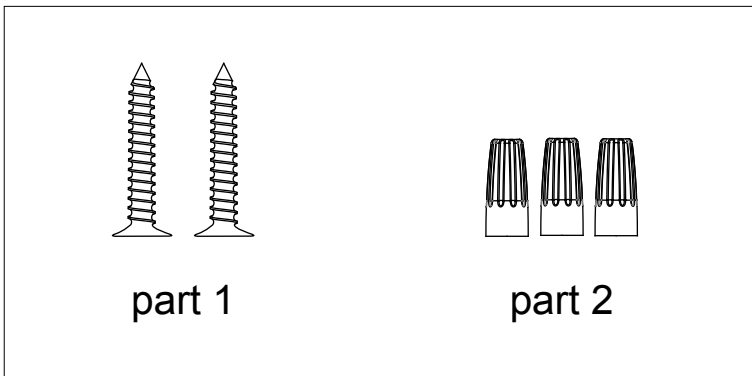


Bravoled 2x2Ft LED Troffer Retrofit Kit, 40Watt 4200lm & 5000lm

## Dimensions and Pictures



## Accessories (optional)



## Accessories package List

Part	Description	Quantity
1	self-tapped screw M4*30	2
2	Wire Nuts	*1or3

Note:

3 wire nuts for dimmable version, 1 wire nut for non-dimmable version.



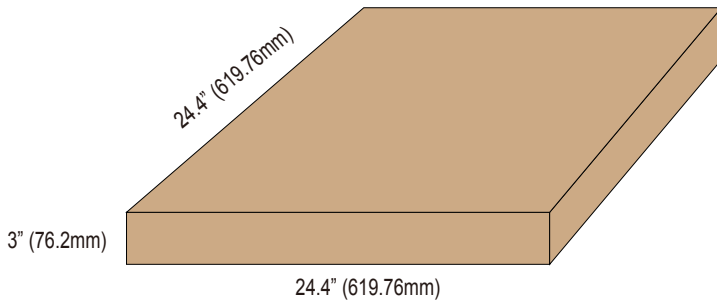
**LM79**  
**LM80**



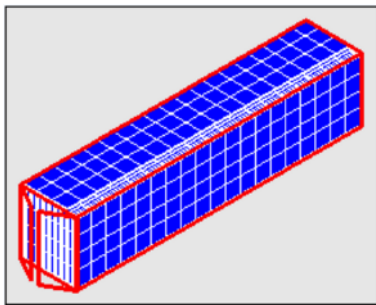
Bravoled 2x2 Ft LED Troffer Retrofit Kit, 40Watt 4200lm & 5000lm

## Packaging

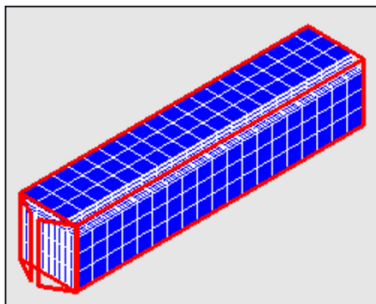
1pc/CTN G.W.: 5.63 kg Dimension: 24.4"L x 24.4"W x 3"H (619.76x619.76x76.2 mm)



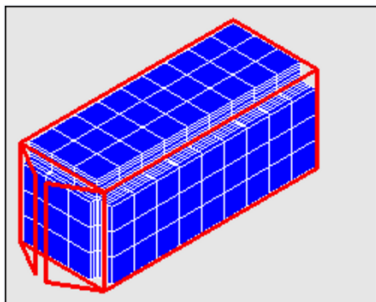
## Container Loading QTY



Size	Corton QTY	Product QTY	Volumn	G.W.
40'hq	2166 ctn	2166 pcs	73.93m <sup>3</sup>	12194.6kg



Size	Corton QTY	Product QTY	Volumn	G.W.
40'gp	1824 ctn	1824 pcs	62.26 m <sup>3</sup>	10269.1kg



Size	Corton QTY	Product QTY	Volumn	G.W.
20'gp	882 ctn	882 pcs	30.11m <sup>3</sup>	4965.6kg



**LM79**  
**LM80**